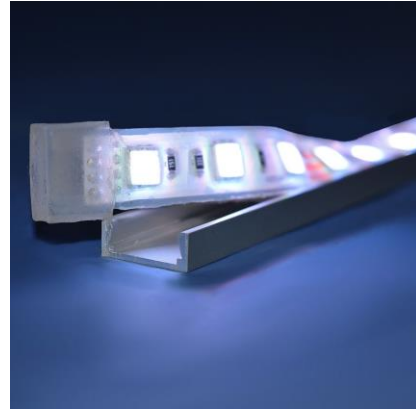


#### **B3001WWKIT MicroLED 12v 10mm x 6mm - Warm White LED 5 metres – 325 L/m – IP67**

MicroLED provides linear lighting where it would previously have been impractical or expensive. Applications include lighting under steps, seating & balustrades and outlining water features, building and garden structures.



#### **PHYSICAL DATA**

- 5m length (supplied on a reel)
- 60 LEDs per metre
- 10mm wide
- 6mm height
- IP67 (end caps and input connections should not be submerged)
- Supplied with support clips, 4 x end caps, 2 x 200mm twin core wire cables & tube of sealant.

#### **ELECTRICAL DATA**

- 12v DC – Requires external PSU or controller
- Power consumption 6w per metre
- 325 lumens per metre output
- LED type – 3528 SMD - 3500K warm white
- 13,000 hrs typical lifespan
- Dimmable via dimmable driver and controller (Sold separately)
- Mercury Free

#### **INSTALLATION**

The LED striplight is supplied in 5m lengths, but can be cut to custom length at 50mm intervals. Whilst the strip has a self-adhesive backing and fixing clips, the use of the B3020 anodised aluminium channel (purchase separately) is recommended for external installations. The item requires assembly prior to installation.

- Solder one of the pre-tinned twin core cables supplied to the terminals on the end of the strip – Red to positive, Black to negative
- Place one of the end caps with holes over the cable and slide it down to the end of the strip
- Fill the end cap with silicone sealant and push down over the end of the strip. Clean any excess away using a damp cloth
- Repeat step 3 at the other end of the strip if using just one length.

**COMPLIANCE & WARRANTY**

- 3 year warranty
- Must not be submerged in water
- CE / RoHS Compliant
- LVD Certified
- Maximum operating temperature 60°C

**ACCESSORIES**

- B3020 Anodised aluminium mounting channel – 1m length
- T9210ENC 12 volt - 60 watt potted LED power supply
- B3010 RF single colour controller

