


The LV-801 is a tiny but powerful IP68 adjustable bracket spot light. This fixture is machined from solid 316 marine grade stainless steel, and uses the Light Visuals high quality replaceable LED module. It also has innovative colour coded interchangeable optics amongst many other key features. The LV-801 Bracket light can be mounted to most types of structure, and with precise aiming and it's secure locking mechanism makes this fixture a very useful lighting tool. It's also available in a range of quality powder coat finishes to compliment hardscape designs.

Light Visuals products are made to order.



 (Please allow 2-4 weeks for delivery).

Available in 316L stainless steel, or UV stable polyester powder coated stainless steel finishes.

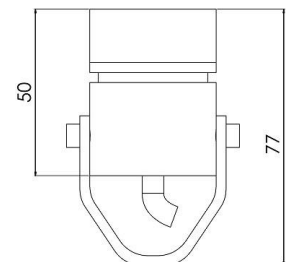
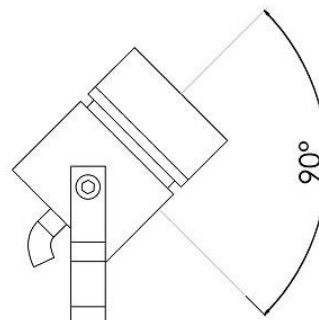
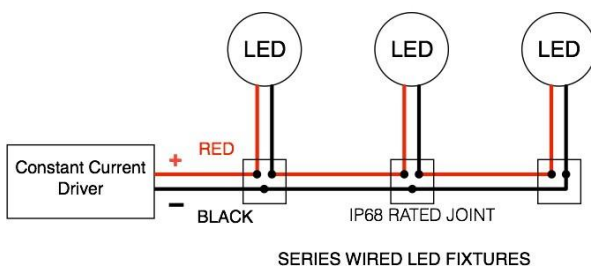
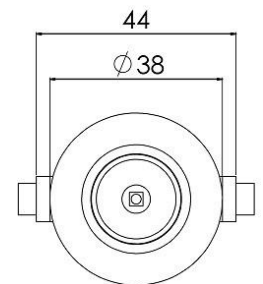
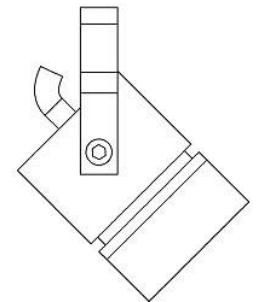
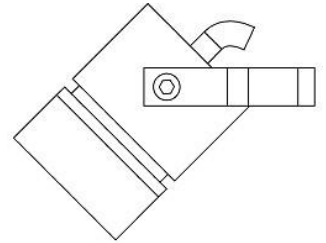
350mA 1.2w	500mA 1.7w	700mA 2.4w	3.2v		LED	IP68	BIN 8B4				PART L
---------------	---------------	---------------	------	--	-----	------	------------	--	--	--	-----------

Key Features

- **Replaceable LED Module.** Permits easy change of colour temperature or replacement of the LED at the end of it's long life.
- **Interchangeable Colour Coded Reflectors (Optics).** For complete design control of beam angles.
- **LED Open Circuit Protection.** Easy identification of a failed LED due to incorrect installation or LED end of life.
- **Internal Anti-Wicking Barrier.** Eliminates moisture ingress due to incorrect cable joints.
- **Choice of 3 Drive Currents.** 350mA, 500mA, 700mA. For complete design control of light output.
- **Choice of 2 Colour Temperatures.** 2700°K Warm White, 4000°K Cool White.
- **Single Bin LED's.** Ensures complete colour consistency with no variation in colour temperature between products.
- **10 Year Warranty** body. **5 Year Warranty** LED board.

Specification

- Designed, manufactured, and hand assembled in England
- **Wiring:** (SERIES)
- Requires a remote (constant current) LED driver 700mA maximum
- **Choice of Light Outputs:** 350mA = 1.2w, 500mA = 1.7w, 700mA = 2.4w
- **Forward Voltage:** 3.2v DC
- **Colour Temperature:** 2700°K (warm white) or 4000°K (Cool white)
- **Light Source:** Cree XP-E (Light Visuals proprietary replaceable LED module)
- **Binning:** 2 Step MacAdams Ellipse binning quality 2700°K only
- **Colour Rendering Index:** CRI 85
- **Lumens:** 80lm@350mA 150lm@700mA (Typical)
- **Dimmable:** 0-10V
- **Beam Choice:** 10°, 18°, 32°, 42°
- **Ingress Protection:** IP68 (submersible)
- **Cable:** 1m 2 core HO5RN-F rubber cable. (can be supplied up to 10m at additional cost)
- **Warranty:** 10 year warranty on brass, stainless steel, powder coated stainless steel)
- **Warranty:** 5 year warranty LED board



July 2018

www.exteriorlightsuk.co.uk

sales@exteriorlightsuk.co.uk Tel: 01689 606342