

INSTRUCTIONS

AlvaLED MRI6 TWIN Spike Light – 12v Plug & Play

All finishes

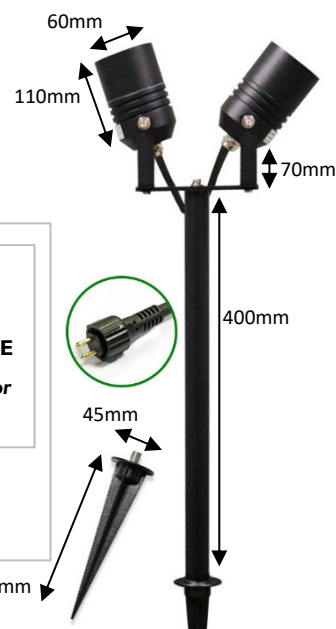


WARNINGS



PLEASE READ THESE INSTRUCTIONS CAREFULLY PRIOR TO INSTALLATION / MAINTENANCE

- If a fitting is found to be damaged, cease use immediately.
- This is a Class 3 product (Low Voltage) – no earth required.
- **12V TRANSFORMER REQUIRED – sold separately**
- This unit must be fitted by a competent and qualified electrician.
- Install in accordance with IEE wiring regulations and current Building Regulations.
- To prevent electrocution, switch off mains supply before installing or maintaining this fitting. Ensure other persons cannot restore the electrical supply without your knowledge.
- This light fitting should be connected to a circuit with a 30Ma RCD fitted. Maximum 12-15 fittings on each circuit recommended – varies based on total cable run.
- If replacing an existing fitting, make a careful note of the connections.
- All connections should be made as watertight as possible to avoid electrical shortage.
- When changing the bulb, always switch off at the mains & allow the bulb to cool before handling – **LAMP WILL GET HOT WHEN IN USE.**
- Always use the correct type & wattage of bulb. Never exceed the wattage stated.
- The unit may get warm whilst on for a period of time.
- 12v Lighting must be wired in parallel, not series, and cable lengths kept to a minimum.
- **DO NOT PUT PRESSURE ON THE HEAD OF THE PRODUCT**



<p>Voltage: 12v (low voltage) Max Wattage: 20w per spotlight Bulb Holder: MR16 x 2 IP Rating: IP65 Cable Length: 2 core rubber cable 0.75mm (approx. 2m) per spotlight Head: Adjustable Materials: Aluminium & Tempered Glass Finishes: Black (Powder Coated) / Titanium & Cocoa (Anodised) Mount: 4 fin ground spike with 40cm pole Included: 2 x Spotlights, riser pole, ground spike, allen key, 2 x cable ties</p>		<p>✓✓✓ 3 YEAR GUARANTEE see website for more details</p>
--	--	---

SILICA GEL & O-RINGS (DO NOT REMOVE):

A small pack of silica gel has been included with this spike light, located inside the heads with the bulb holder. This should **not** be removed. Condensation inside the spike light is inevitable due to the heat generated from lamps and cold weather conditions, especially if installed on a damp day. The pack of silica gel will collect the moisture inside the fitting, preventing this. It is recommended that the silica gel is replaced when the light bulb is replaced, if not before, and the white rubber o-ring checked. This fitting should not be used if there are any signs of damage.

CLEANING:

Occasional cleaning and care is recommended for this product. Please refer to our website for the best way to clean different materials.

RETURNS & DISPOSAL:

If purchased from a 3rd party, please contact your supplier.

If purchased direct, contact us by phone or email:

Exterior Lights UK Ltd

Tel: +01689 606342

Email: sales@exteriorlights.co.uk

Our full returns policy is available on our website.

Waste Electrical Products should not be disposed of with household waste. Please check with your local authority or contact us for more information. Please recycle packaging when possible. **Producer Registration Number: WEE/KC3440XY**

WIRING / CONNECTION:

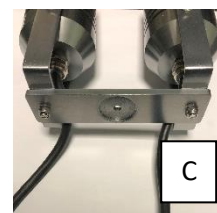
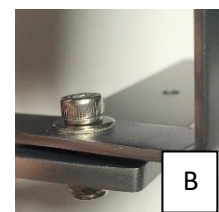
IMPORTANT:

1. If buried or laid on muddy surface, cable should be placed inside conduit or piping to protect from water-logging, damage and chemicals found in soil. If this method is not used, cable warranty may be void. Cables can also be hooked up on fences safely, however protective sleeving is still recommended.
 2. It is recommended that the number of fittings on each circuit are kept to a minimum, fittings are positioned as evenly as possible around a circuit and each run kept as short as possible to prevent voltage drop. For longer cable runs, thicker cable (1.5mm or 2.5mm) may be required.
 3. Ensure the transformer has plenty of air circulation to avoid overheating.
- Decide on the positioning of the spike light. See below for mounting installation.
 - Locate the mains electrical supply (pre-installed armoured cable / outdoor socket).
 - Connect the male 2 pin plug of the both spotlights to the splitter by pushing into the female socket.
 - Using a versa extension cable (double male), connect the splitter to the transformer (or splitter for a larger install).
NOTE: A small rubber o-ring must be present in the external groove of the male plug.
 - Secure all VERSA 2 pin plugs in place with the threaded cap.
 - Ensure all connections are tight.
 - Install lamp (see below)
 - Connect the transformer to the mains supply (plug supplied can be removed).
 - If preferred, cable tie the cables to the back of the pole, one under the twin adaptor (top of pole) and one just above the ground spike.
 - Once fully installed, turn on the mains power.



MOUNTING:

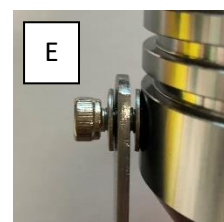
1. Tilt the spotlight heads to create plenty of room between the head and twin adaptor.
2. Remove the socket screw, locknut and washers from the adaptor with the allen key provided.
3. Attach each head to the top of the adaptor (smooth side) with the removed screws, washers and nuts, facing away from each other to leave a large gap in the centre (see pics B & C). These can be adjusted later by loosening the socket screws slightly. **TIP:** for ease of loosening / tightening screws (due to little clearing for the allen key) hold the socket screw securely with the allen key and tighten the nut with an 8mm spanner.
4. Remove the socket screw and washer from the pole, place the adaptor on top of the pole using the guide underneath the adaptor and attach with the socket screw / washer by hand.
5. Place the allen key inside the socket screw of the pole to hold firmly in position and turn the pole by hand to tighten fully (see pic D).
6. Screw the threaded 4 fin ground spike to the bottom of the pole by hand and securely tighten.
7. Dampen the ground in the area where the fitting is to be installed.
8. Carefully, push the spike into the ground to the desired depth with the centre of the twin adaptor. Do **NOT** put pressure on the spotlight heads.
9. Gently compact the earth around the spike to ensure the spike is mounted firmly in the ground and does not move from side to side.
10. Adjust the position of the spotlights heads if desired and ensure the locknuts are securely fastened.



ADJUSTING THE SPOTLIGHT HEAD:

The head can be adjusted and set at various angles via the U Bracket. If this is too secure to adjust, follow the following steps:

1. Support the head and slightly loosen the 2 x socket screws found on each side of the U Bracket using the allen key provided by turning anti-clockwise – one turn should be enough to allow the head to move up and down (**do not fully remove**).
2. Angle the head in the desired position and tighten the loosened screws to secure in place.
3. If a screw becomes fully removed, return into the outer side of the bracket with a washer on each side as per image (E).



INSTALLING / CHANGING LAMP:

- Unscrew the cap of the spotlight by hand (anti-clockwise).
- Push in the MR16 using the guides to push the pins into the two holes below.
- Ensure silica gel pack is present (change if damp).
- Ensure o-ring is present on the male thread of the body and is not twisted.
- Replace cap and tighten securely by hand (clockwise).