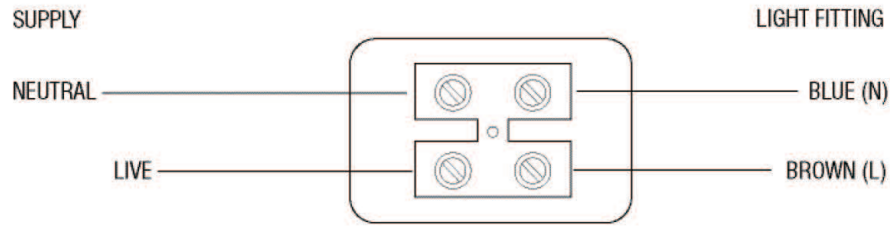


## Wiring

Having correctly identified the wiring from your existing light fitting, connect to the approved IP67 (or higher rated) terminal block in the following way. (recommended terminal block ref. 61515)

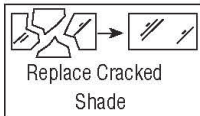


## Check that...

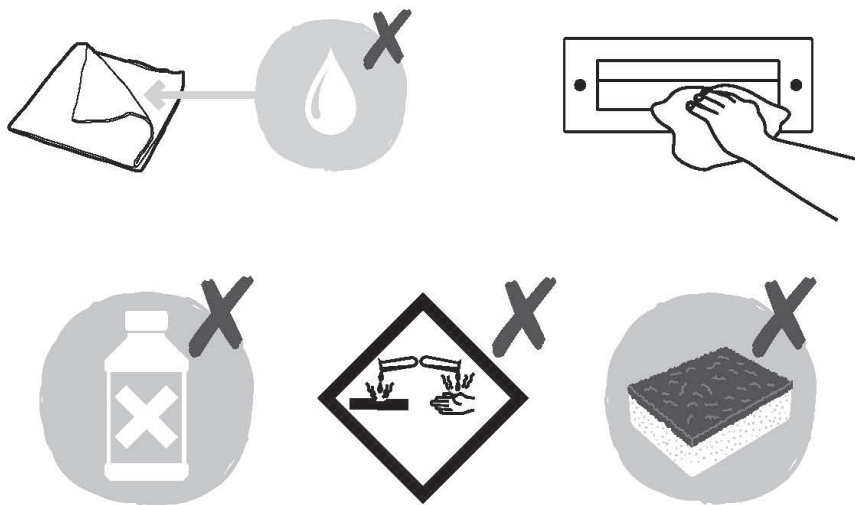
- You have correctly identified the wires.
- The connections are tight.
- No loose strands have been left out of the terminals.

## Care and Safety

- We recommend cleaning with a soft dry cloth. Do not use solvents or abrasive cleaners as these could damage the finish.
- For your safety, always switch off the supply before cleaning.



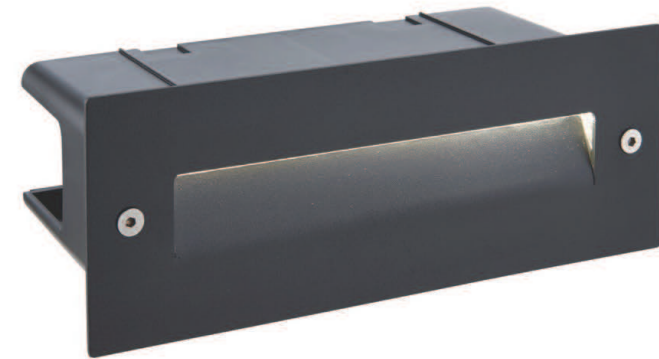
The LED module is protected by a shade. This part must be replaced immediately should the shade become cracked or damaged. This fitting must not be used without the shade in place.



## Instruction leaflet

# Seina Guide Recessed

75527, 78644



CE