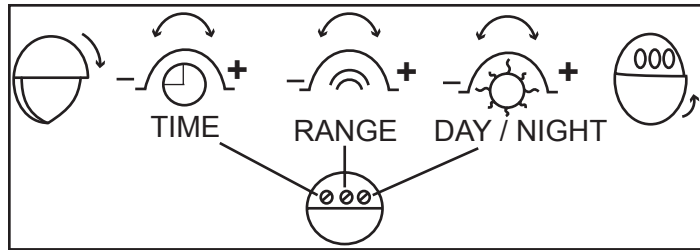


until the light level drops.

- **To adjust Time On.** By adjusting the timer dial, the unit will stay on (once activated) from 5 seconds to 5 minutes.
- **To adjust range level:** By adjusting the Range level dial, the unit will activate from 4 metres to 8 metres. The angle of

detection is approximately 110°.

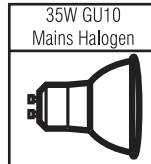
- **To adjust the light level:** By adjusting the Light level dial, the unit will activate either in daylight or at night.
- For optimum detection range a mounting height of 1.8M to 2.5M metres is recommended.



Fitting/replacing bulbs

When changing a bulb, always switch off at the mains and allow the bulb to cool before handling. Dispose of used bulbs carefully. Do not exceed the wattage stated or use a different shape bulb from that indicated on the fitting.

Use a soft cloth to handle bulbs, avoid directly touching the bulbs as this will shorten their life.



Care and Cleaning

Do not use solvents or abrasive cleaners as these could damage the finish.

In normal circumstances, stainless steel is very resistant to corrosion. It does however require maintenance to preserve the high quality appearance. Wash the product with warm soapy water, removing all surface deposits. Rinse with clear water and with a soft cloth, wipe dry.

In some cases, surface corrosion may arise after installation. This is normally caused by tiny iron particles left behind after the brushing process when finishing.

Wash and dry as detailed above. Then with a soft cloth soaked with a protective oil, wipe all over.

However if the product is subject to extreme environmental conditions such as marine locations, industrial pollution and acid rain these maintenance procedures should be carried out around four times a year. For severe corrosion, non-abrasive cream cleaners or proprietary stainless steel cleaners should be used to remove the corrosion. Wash and dry as detailed above. Then with a soft cloth soaked with a protective oil, wipe all over.

Do not clean the units with a pressure washer.

Recycling advice



Waste electrical products should not be disposed of with household waste. Please recycle where facilities exist. Check with your Local Authority or retailer for recycling advice.

Safety information

For your safety, always switch off the supply before changing lightbulbs, or cleaning.



This bulb is protected by a shade. This part must be replaced immediately should the shade become cracked or damaged. This fitting must not be used without the shade in place.

Iss.2 05082015

Instruction leaflet

Canon PIR Wall

EL-40062 (57337), EL-40063 (57338)



saxby
lighting

Thank you for purchasing this light fitting. Please read the instructions carefully before use to ensure safe and satisfactory operation of this product. Please retain these instructions for future reference.

Warning

This is a Class 1 product and must be earthed.

Please read these instructions carefully before commencing any work.

This unit must be fitted by a competent and qualified electrician.

Install in accordance with IEE Wiring regulations and current Building Regulations.

To prevent electrocution switch off at mains supply before installing or maintaining this fitting. Ensure other persons cannot restore the electrical supply without your knowledge. If you are in any doubt, please consult a qualified electrician.

This light fitting should be connected to a circuit with a 30mA RCD fitted.

If replacing an existing fitting, make a careful note of the connections.

Always use the correct type and wattage bulb. Never exceed the wattage stated.

When changing a bulb, always switch off at the mains and allow the old bulb to cool down before handling. Dispose of used bulbs carefully and responsibly.

Waste electrical products should not be disposed of with household waste. Please recycle where facilities exist. Check with your local authority or retailer for recycling advice.

This product is rated at IP44.

This product is not suitable for location in or near a marine or sea environment.

The entire unit gets hot whilst on for a period of time.

This type of light fitting may be connected to a dimmer if a Tungsten incandescent bulb is used (as supplied). If a CFL type bulb is fitted then these cannot (generally) be controlled by a dimmer.

Specification

Voltage: 240V 50Hz a.c.

Lamp: EL-40062: 2x Max. 35W GU10

IP rating: 44

EL-40063: 1x Max. 35W GU10

Layout

- Plan the desired layout of this fitting carefully, ensuring the cables will reach the distance between the junction box and the light fitting.
- Avoid locating any cables in positions that would cause a hazard. Position cables and outdoor rated junction boxes (not supplied) away from areas where they may be at risk from being cut, trapped or damaged.

Installation

Existing fittings must be completely removed before installation of a new product. Before removing the existing fitting, **carefully note the position of each set of wires.**

- Separate the plastic back plate from the fitting by removing the two domed nuts / washers on the front of

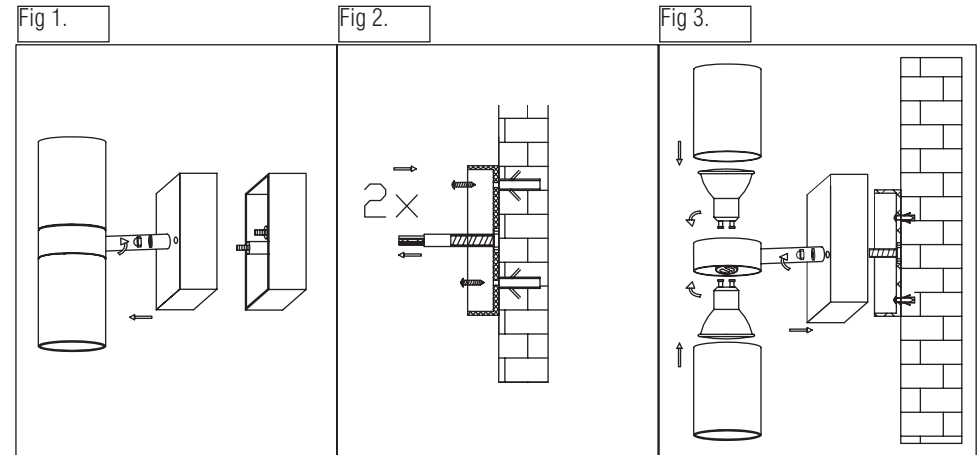
- We recommend that you use H05RN-F specification cable (not supplied) which is an outdoor grade, rubber sheathed cable. The mains supply cable must have a minimum cross sectional area of 1.0mm²
- Cables must be protected using suitable conduit or plastic trunking.

the fitting. Leave the threaded bolts in the back plate (Fig 1).

- Use the back plate as a template to mark the screw holes. Make sure the back plate is correctly aligned with the drain hole at the lowest position.

- Attach the backplate to the wall using the appropriate fittings (Fig 2).
- Use a sharp object such as a screwdriver to pierce the

rubber grommet in the back plate. Feed the incoming cable through the rubber grommet and attach the back plate to the wall. Wire as detailed below.

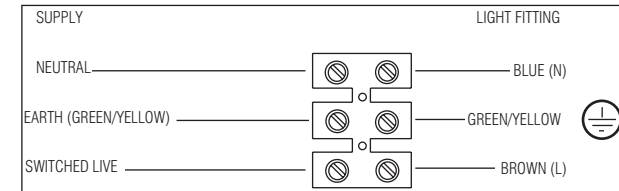


Wiring

Having correctly identified the wiring from your existing light fitting, pull the wire through the hole and connect to the connection block inside the product in the following way:

Check that...

- You have correctly identified the wires
- The connections are tight
- No loose strands have been left out of the connection block.



Commissioning

- Place the fitting over the back plate, ensuring that the bolts in the back plate are aligned with the holes in the front of the fitting. Replace the domed nuts/ washers to secure the fitting. Do not over tighten.
- Fit the bulbs into the lamp holders, and refit the bulb covers.
- Replace fuse or circuit breaker and switch on. Your light is now ready for use.

PIR Adjustment

- To test the PIR unit in daylight, pull the lens cover down to expose the dials- then turn the timer dial gently fully anti-clockwise and turn the Day/ Night dial gently fully clockwise.

Lift the lens cover and activate the PIR by covering the PIR lens with your hand. The unit will light and should stay on for approximately 5-10 seconds then go off. It will remain off