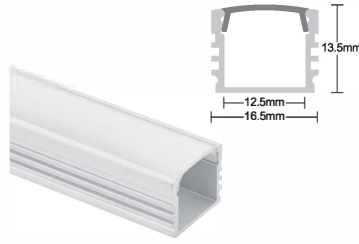


EXTRUSION

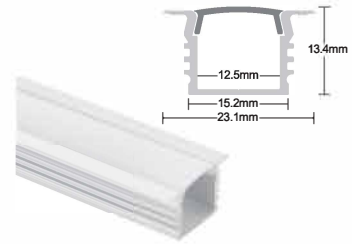
80497, 80498, 80499, 80500, 80501, 94946, 94947, 94948, 94949



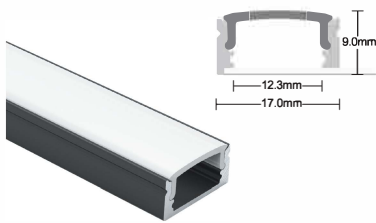
80497
Surface profile-slim



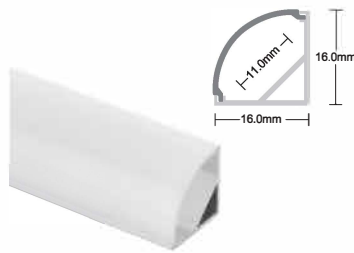
80498
Surface profile



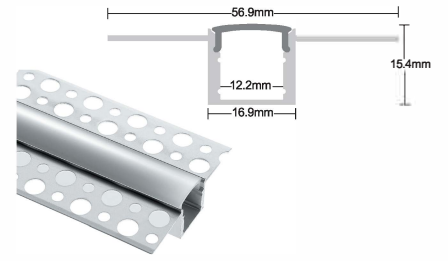
80499
Recessed profile



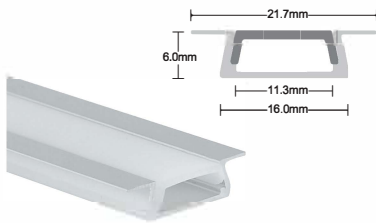
94946
Surface profile-slim black



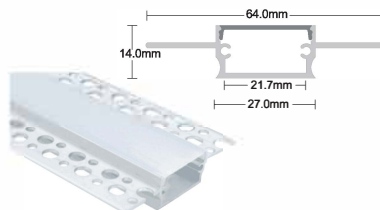
80501
Corner profile



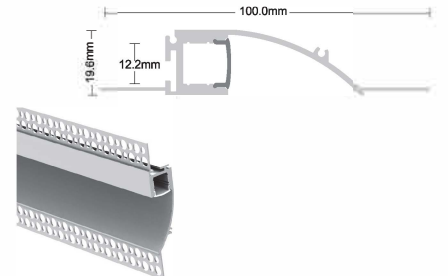
80500
Plaster-in profile



94947
Recessed-slim



94948
Plaster-in wide



94949
Wall flange plaster-in

Thank you for purchasing this accessory. Please read the instruction carefully before use to ensure safe and satisfactory operation of this product. Please retain these instruction for future reference.

Specification

Dimensions: 80497: 2000mm x 17mm x 9mm	80498: 2000mm x 16.5mm x 13.5mm	80499: 2000mm x 23.1mm x 13.4mm
94946: 2000mm x 17mm x 9mm	80501: 2000mm x 16mm x 16mm	80500: 2000mm x 56.9mm x 15.4mm
94947: 2000mm x 21.7mm x 6mm	94948: 2000mm x 64mm x 14mm	94949: 2000mm x 100mm x 19.6mm

Please Note

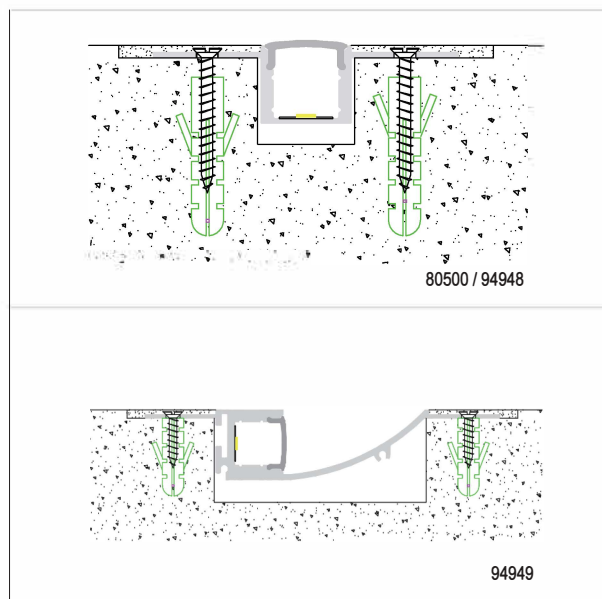
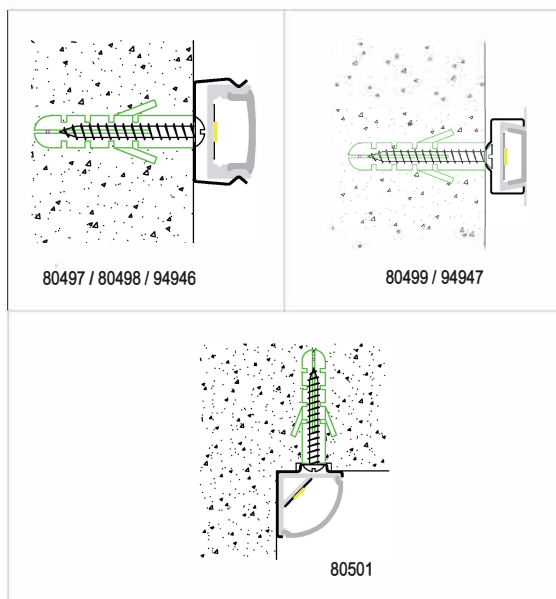
- These profiles are designed for use with the following LED kits:
 79315 : Trocken Tape 5m IP20 3000K 79316 : Trocken Tape 5m IP20 4000K 79317 : Regen Tape 5m IP65 3300K 79318 : Regen Tape 5m IP65 4000K
- Please check other LED module dimensions before installing into these profiles.

Installation for 80497/80498/80499/80501/94946/94947

- Choose an ideal place to mount the profile.
- Remove the 4 brackets from the fixing pack.
- Using the brackets as templates, mark and drill the position of the fixing holes.
- Ensure the mounting structure is capable of holding the weight of the product. Take care to avoid damaging any concealed wiring and pipes.
- Attach both brackets to the chosen mounting surface using the provided screws.
- Remove the backing off of the chosen LED module strip and stick down inside the aluminium profile.
- Attach diffuser to the profile, sliding into the profile grooves.
- Place end caps onto the ends of the fitting.
- Push profile onto the brackets to secure.
- Your fitting is now ready for use.

Installation for 80500/94948/94949

- Using the aluminium profile as templates, mark and drill the position of the fixing holes.
- Ensure the mounting structure is capable of holding the weight of the product. Take care to avoid damaging any concealed wiring and pipes.
- Remove the backing off of the chosen LED module strip and stick down inside the aluminium profile.
- Attach diffuser to the profile, sliding into the profile grooves.
- Place end caps onto the ends of the fitting.
- Push the aluminum profile into the existing groove.
- Then use screws to fix the aluminum profile to the wall
- Cemented the sides of the aluminum profile.



* Product images may vary.

Care and Safety

We recommend cleaning with a soft dry cloth. Do not use solvents or abrasive cleaners as these could damage the finish. For your safety, always switch off the power supply before changing lightbulbs, or cleaning.